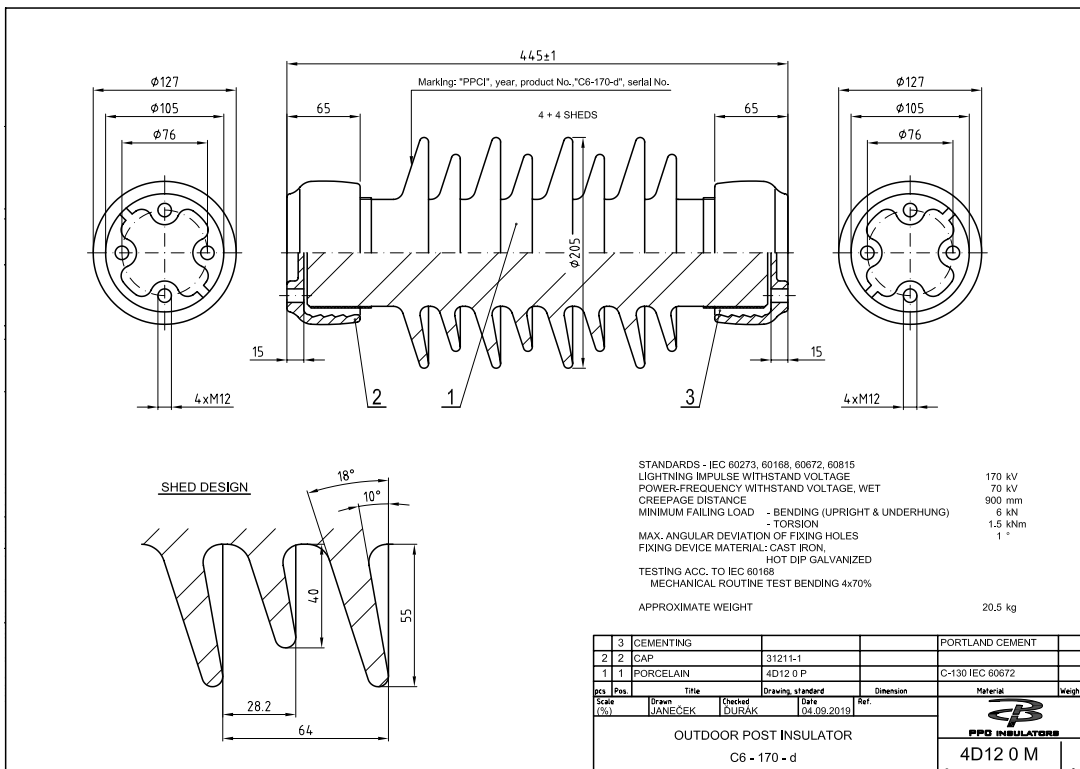


TYPE

BIL 170 kV

PPC Catalogue No.: 342 150 4D12 0814

Specification Description	Technical Particulars	Unit
Manufacturer's Name & Country	PPC	
Manufacturer's Type Designation	Products	
Drawing No.	4D12 0 M	
Mechanical strength	6	kN
BIL	170	kV
Minimum CD	900	mm
Top PCD	76	mm
Bottom PCD	76	mm
Glaze Color	brown	
No. of Units	1	
kV Level	36	kV
Core Diameter	95	mm
Max. Shed/Outer Diameter	205	mm
Porcelain Weight	15	kg
Assembled Weight	20.5	kg
Height	445	mm
Large Sheds	4	
Small Sheds	4	



TYPE

BIL 170 kV

PPC Catalogue No.: 342 150 4D13 0814

Specification Description	Technical Particulars	Unit
Manufacturer's Name & Country	PPC	
Manufacturer's Type Designation	Products	
Drawing No.	4D13 0 M	
Mechanical strength	10	kN
BIL	170	kV
Minimum CD	1120	mm
Top PCD	76	mm
Bottom PCD	76	mm
Glaze Color	brown	
No. of Units	1	
kV Level	36	kV
Core Diameter	95	mm
Max. Shed/Outer Diameter	235	mm
Porcelain Weight	21	kg
Assembled Weight	25	kg
Height	445	mm
Large Sheds	4	
Small Sheds	4	

